

# Products & Practice

## DICA MaxiTrack

DICA announced MaxiTrack®, a heavy-duty ground protection and site access mat. MaxiTrack is an access mat solution that can be deployed by hand to provide temporary access for wheeled or tracked equipment weighing up to 150 tons (136 tonnes). The 1 in. (25 mm) thick mats measure 3 x 6 ft (0.9 x 2 m) and weigh 88 lb (40 kg), making them light enough to be handled by just two people. The heavy-duty, high-density polyethylene plastic construction of the mat has the strength and rigidity to stand up to heavy equipment traffic. In addition to roadways, MaxiTrack can be configured for tight areas and in asymmetrical shapes. For projects that cover large areas, four mats can be preassembled and mechanically lifted into place from lifting points to accelerate deployment. Made entirely of recycled material, MaxiTrack is authorized for use by the North Atlantic Treaty Organization (NATO).

—DICA, <https://dicausa.com>



## Genesis GRP 480

Genesis announced the GRP 480, a hydraulic mobile shear designed for processing reinforcing bar. The GRP 480 Rebar Processor features numerous bolt-on wear parts and surfaces for easy maintenance and jaw protection. The bolt-on, weldable lower tusks work with the weldable, replaceable piercing blades to efficiently sort and separate reinforcing bar bundles. Additionally, a bolt-on plate on the cutting side of the upper jaw provides a replaceable wear surface and protects the jaw's parent material. The GRP 480 also features an extra-large pivot group designed to withstand the rigors of daily reinforcing bar processing and provide maximum durability. The product has a 24 in. (610 mm) jaw opening with a 26 in. (660 mm) jaw depth and fits up to 48,000 lb (21,800 kg) carriers second-member mounted and 90,000 lb (40,800 kg) carriers third-member mounted.

—Genesis Attachments, LLC, [www.genesisattachments.com](http://www.genesisattachments.com)



## BRUNT USA Marin Weltd

BRUNT Workwear introduced the USA Marin Weltd work boots. The boots feature durable, heavy-duty welted construction that provides enhanced stability on the job. The boots come equipped with a fully waterproof build and soft and nanocomposite safety toe options. They also include innovative slip, oil, and high heat-resistant outsoles that protect up to 572°F (300°C). The USA Marin Weltd boots are available on BRUNT's website in a dark brown colorway, with additional colors to follow.

—BRUNT Workwear, <https://bruntworkwear.com>



# ReadCi

## ONLINE COVER-TO-COVER

A full version of the current issue of *Concrete International* is available to ACI members by logging in at [www.concreteinternational.com](http://www.concreteinternational.com).

Click "DOWNLOAD THE ISSUE" on the magazine's home page.

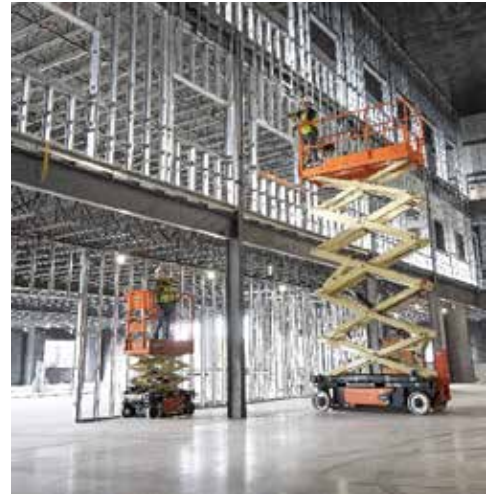


# Products & Practice

## New Features for JLG Electric Lifts

JLG Industries, Inc., introduced new features and options for its line of ES electric slab scissor lifts, ERT electric rough terrain scissor lifts, E18 drivable vertical lifts, and E18 drivable stock picker. The ES1932, ES2632, ES2646, and ES3246 ES electric scissor lift models now feature AC drive motors as standard equipment. These permanent magnet AC drive motors offer efficiency through lower energy consumption, require less battery draw, and are virtually maintenance-free. Select JLG ES scissor lifts, E18 vertical lifts, and the E18 stock picker can now be outfitted with lithium-ion batteries. Customers can choose between Lithium, which offers one battery on most models, and Lithium+, which provides an additional battery to increase duty cycles. These battery options offer zero performance degradation, fast charging capabilities, and extended battery lifespan. JLG has also introduced a genset option for its electric rough terrain scissor lift models. This 2610 W, 58 V, and 45 A unit allows operators to recharge batteries anytime and anywhere, extending the range and increasing productivity and jobsite versatility.

—JLG Industries, Inc., [www.jlg.com](http://www.jlg.com)



## Humboldt Dynamic Cone Penetrometers

Humboldt's Dynamic Cone Penetrometers (DCPs) provide a low-cost, efficient test method for quickly determining in-place California Bearing Ratio (CBR) values of pavement base, subbase, and subgrades. DCPs are primarily used to determine in-place soil shear strength in road construction with CBR values from less than 0.5 to 100% and bearing values ranging from 430 to 10,800 lb/ft<sup>2</sup> (21 to 517 kPa). The penetrometers can readily be used for depths from 30 in. to 6 ft (762 mm to 2 m) with optional drive rods and extensions. All Humboldt DCPs comply with ASTM D6951/D6951M specifications and come with a chart to compute CBR values, as well as an Excel spreadsheet template, which automatically charts test results.

—Humboldt, [www.humboldtmg.com](http://www.humboldtmg.com)

## Milwaukee Tool Tape Measures

Milwaukee Tool introduced a new line of tape measures designed to excel in jobsite conditions. The STUD™ Tape Measure is equipped with EXO360™ Rip & Wear Resistant Blade Technology, offering blade protection and extended lifespan. It provides 17 ft (5 m) of reach and 14 ft (4 m) of standout. The Wide Blade Tape Measure offers up to 18 ft (6 m) of reach and 15 ft (5 m) of standout. This makes it ideal for users to take long precise measurements independently. It includes a finger stop for quick and controlled blade retraction and a fully reinforced, impact-resistant body. The Magnetic Tape Measure features a blade with 15 ft of reach and 12 ft (4 m) of standout. Its balanced design provides control and ease of use, while the low-profile magnet enhances both top and bottom hook grab. Additionally, the Electrician's Magnetic Tape Measure features electrician-specific conduit bending, three-phase reference tables, and a larger magnetic top hook. The Compact and Auto-Lock Tape Measures are designed for users working in finished environments. The Compact Tape Measure features a finger stop, offering better control during use, while the Auto-Lock Tape Measure features automatic locking to secure the blade for quick and efficient measurements. Both Compact and Auto-Lock Tape Measures offer 12 ft of reach and 9 ft (3 m) of standout.

—Milwaukee Tool, [www.milwaukeetool.com](http://www.milwaukeetool.com)



## Pettibone Extendo 1044X

Pettibone introduced the Extendo 1044X telehandler that is designed to offer ample lifting power and stability without the need for outriggers, reducing maintenance requirements and enhancing operational speed for users working in construction and masonry applications. The telehandler delivers a maximum lift capacity of 10,000 lb (4540 kg) and a max lift height of 44.5 ft (13.6 m). The 1044X features a three-section boom comprised of formed plates that offer greater strength while reducing weight. A bottom-mounted external extend cylinder further reduces the load on wear pads. The Extendo 1044X comes standard with X-Command®, a Pettibone telematics program that offers real-time access to machine data. Built for use on rough terrain, the unit offers full-time four-wheel drive with limited-slip front axle differential. The Extendo operator cab maintains Pettibone's ergonomic seat, pedal, joystick, and steering wheel positions, while optimizing line of sight in all directions. The cab also offers enhanced climate control, flat bolt-in glass, split door design, openable rear window, lockable storage under the seat, and water-resistant components for easy interior washdown. All-steel fuel and hydraulic tanks are built to resist damage. Other features include nontensioned boom hoses, split-system electrical circuit panels, and heavy-duty bright LED lighting.



—Pettibone Traverse Lift, LLC, [www.gopettibone.com](http://www.gopettibone.com)

## Web Notes

### ACEC New Website

The American Council of Engineering Companies (ACEC) announced the launch of its new website. The primary goal of the design process was to develop a website that better reflected the vibrancy and essential work of engineering while also inviting existing and potential ACEC members to learn about the association and the variety of programs and benefits offered. The site was updated to present a more clean, elegant, and modern look that puts the user experience first. One new feature of the website is the resource library, which stores all the publications, letters, and key reference materials available to members. The resource library now serves as a unified space where this material can be searched by topic and resource type.

—American Council of Engineering Companies, [www.acec.org](http://www.acec.org)

### CPWR Nanomaterials in Construction Data Dashboard

The Center for Construction Research and Training (CPWR) resource, the Nanomaterials in Construction Data Dashboard, examines the types of nanomaterials found in nearly 900 products and the trades most likely to use them. The number of construction products that contain engineered nanomaterials continues to grow. These particles, which are many times smaller than the width of a human hair, appear in paints, cement, insulation, and many other products, which means that workers in every trade are likely to encounter them. Because some nanomaterials may pose health risks, CPWR tracks and shares how they are used. Also available are the eLCOSH Nano Inventory, a regularly updated list of products, and the Nano Safety Data Sheet Improvement Tool, which helps manufacturers, distributors, and importers of these products evaluate their safety data sheets and improve them.

—CPWR, [www.cpwr.com](http://www.cpwr.com)

# Product Showcase

## Technologies for Enhancing Durability

### **PENESEAL PRO**

Penetron's PENESEAL PRO, a liquid reactive penetrating concrete sealer, protects against water, sulfate ingress, and chloride and can be used in several applications, including highway bridges, concrete roofs, podium decks, terraces, runways, and driveways. This year, PENESEAL PRO was used to increase durability of the upgraded Panamericana Oestae Highway located between Loma Cová and Burunga, Panama. Applied as a spray-on liquid sealer, PENESEAL PRO is a reactive sealer that penetrates the concrete to form a sub-surface gel barrier to protect concrete against water penetration. This sub-surface gel seals the pores, capillaries, and cracks of the concrete matrix and remains active as long as water is present to seal any future hairline cracks.

—Penetron, [www.penetron.com](http://www.penetron.com)

### **EucoTilt SB and EucoTilt WB**

The Euclid Chemical Company announced the launch of EucoTilt SB and EucoTilt WB. EucoTilt SB is a solvent-based bond breaker that features a chemically reactive, membrane-forming cure. Formulated without wax or hydrocarbon resins, EucoTilt SB uses organic compounds to react with free lime in concrete casting surfaces, forming amorphous gels and metallic soaps. This chemical reaction ensures a clean release of cast panels, minimizing surface defects and eliminating the need for subsequent repairs. EucoTilt SB's unique solvent blend enables rapid drying, even in cool, damp conditions—enhancing on-site productivity. EucoTilt WB is a water-based bond breaker alternative with identical chemical reactivity and performance benefits. EucoTilt WB contains no wax or hydrocarbon resins—ensuring compatibility with post-applied coatings and preventing staining or adhesion issues. It is a microemulsion featuring an ultra-small particle size, which offers improved application characteristics and more uniform film formation on a casting slab. The product complies with all U.S. Environmental Protection Agency (EPA) and local volatile organic compounds (VOC) regulations. Both EucoTilt SB and EucoTilt WB meet the moisture retention properties of ASTM C309 when applied to hard-troweled surfaces prepared according to CEN/TS 14754-1.

—The Euclid Chemical Company, [www.euclidchemical.com](http://www.euclidchemical.com)



### **AMX 5500**

Microban International and MarMac Applied Infrastructure Sciences (AIS) announced their partnership and the launch of MarMac's Concrete Admixture AMX 5500, a concrete protectant that integrates Microban's antimicrobial technology into a concrete admixture product. AMX 5500 inhibits damaging bacterial growth in treated concrete and is designed for use in all forms of concrete. This product provides a solution to help prevent staining, bacterial growth, and microbial-induced corrosion of concrete. AMX 5500 won't alter the visual appearance of cured concrete, won't wash away, and lasts the lifetime of the treated structure. It can be used in all construction environments and is particularly helpful in humid and challenging environmental conditions, such as sewer/sanitary infrastructure, where sulfide-producing microbes can damage critical infrastructure. AMX 5500 is also effective in reducing aesthetically damaging stains from molds and mildews in a wide variety of commercial and residential concrete, from parking garages and commercial buildings to sidewalks, driveways, patios, and pool decks.

—MarMac Applied Infrastructure Sciences, <https://marmac.com/ais>

## MCI-2026

Cortec MCI®-2026 is a 100% solids, two-component novolac epoxy coating designed for areas that need high chemical or abrasion resistance. It can be used on concrete floors, concrete counters, and metal tanks (when used with MCI-2026 Concrete Primer WB). Possible applications include chemical processing plants, manufacturing plants, or industrial facilities that get heavy traffic or are at risk for chemical spills. Because MCI-2026 meets all USDA/FDA guidelines for use in federally inspected facilities, it can also be used for coating floors in commercial kitchens and at food processing sites. To see if MCI-2026 is a good match for the substances it is likely to encounter in the facility it is being used in, customers can check the “MCI-2026 Floor Coating Chemical Resistance Guide.” This list is sorted by multiple categories, including organic acids, inorganic acids, chlorinated solvents, aromatic and aliphatic solvents, alcohols, ketone esters, alkalis and salts, miscellaneous, and oils.

—Cortec, [www.cortecmci.com](http://www.cortecmci.com)



**We build talent.**  
Talent builds buildings.

**BAKER**  
Construction

[www.BakerConstruction.com](http://www.BakerConstruction.com)    

EOE DISABILITY/VETERANS EMPLOYER

**Congratulations to the ACI 2024 Excellence in Concrete Construction Award Winners**