

Products & Practice

Minnich Control Speed Vibrator

Minnich Manufacturing, a manufacturer of concrete dowel pin drills, concrete vibrators, and vibrator monitoring systems, introduced the Control Speed Vibrator (CSV). The CSV is a lightweight, durable, electric flex shaft concrete vibrator controlled by Bluetooth connection through the Minnich app on an iOS or Android device. Operators have the option of setting a specific speed or choosing between set speeds of 6000, 8000, or 10,500 vibrations per minute. Choosing slower vibration speeds lessens material separation and reduces surface blemishes and repairs. Once a speed is chosen, the CSV will maintain that speed as the concrete load changes. The 15-amp (115-volt) universal motor drives a full line of Minnich shafts and heads and comes standard with a quick disconnect that adapts to the vibrators of many manufacturers. The CSV was designed with a soft start that saves energy and mechanical wear on the motor and power system.

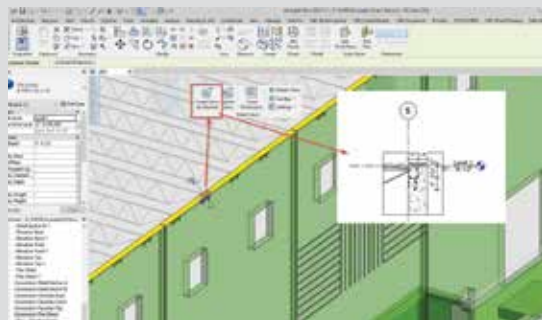
—Minnich Manufacturing, www.minnich-mfg.com



Smart Views Tool for Revit Users

AGACAD created Smart Views, a tool that makes project documentation easier for architects and engineers who use Autodesk® Revit®. Smart Views allows users to create any number of views with automated dimensions for selected elements in Revit without creating an assembly. Smart Views is especially suited for Revit users who need to make drawings of sections and elevations of any building element, all the way from preliminary design stages through to a detailed design. Use examples include viewing a cast-in-place concrete wall with mechanical, electrical, or plumbing penetrations; elevations of selected walls; or a section at a particular connection.

—AGACAD, www.agacad.com



Blåkläder Workwear Products

Blåkläder, a manufacturer of workwear, launched two new products. A Hi-Vis Softshell Jacket and Ripstop Pants join Blåkläder's extensive line of workwear known for functionality, durability, and comfort. The wind and water-resistant softshell jacket is available in men's and women's cuts, was designed with safety top-of-mind, and has reflective details and tape on the body and sleeves. It features adjustable Velcro sleeves, front zipper pockets, an adjustable collar, a detachable hood, an extended back, and an adjustable hem.

Blåkläder enhanced its 1691 Ripstop pants with highly requested utility pockets. These pants also feature Cordura-stretch reinforced top-load knee pockets, reinforced carpenter pockets, and a gusseted crotch panel made from stretch material that increases flexibility and durability. The fabric is lightweight and comfortable yet delivers durability. The Ripstop pants are available in three colors—stone, navy blue, and black.

—Blåkläder, www.blaklader.com



Products & Practice

ECOPlanet TerCem to Scale Green Building Solutions

LafargeHolcim introduced an ECOPlanet product, TerCem™, that is an ultra-low carbon footprint cement. TerCem, a cement product tri-blend, offers up to 65% CO₂ reduction. Specially developed in the Lafarge Whitehall cement plant in Pennsylvania, USA, it offers early strength performance in concrete. ECOPlanet cement products, along with TerCem, will enable low-carbon construction at scale. TerCem was designed for the building sector and post-tensioned concrete structures in urban areas, with the potential to be used in numerous applications where a low carbon footprint is desired.

—LafargeHolcim, www.holcim.com

AlertCast PAVER Featuring Engineered Flange

Detectable Warning Systems™ (DWS) has engineered and developed its AlertCast PAVER in response to air entrapment issues stemming from traditional ribbed paver designs. The AlertCast PAVER delivers minimal aggregate displacement by combining four side-flange vents and PENETRATOR® anchors, allowing easy and solid installations. Whereas the rib designs of traditional pavers run center-to-center (north-to-south), AlertCast PAVER's design features four side-flange vents running right-to-left (east-to-west). The design thus minimizes air entrapment between the paver and concrete.

AlertCast PAVER is a glass-reinforced thermoset composite panel engineered for superior impact resistance, slip resistance, wear resistance, and long-term durability. It features truncated domes molded to comply with the in-line dome spacing specifications in the Americans with Disabilities Act (ADA) Accessibility Guidelines. The panels can be used in a wide range of publicly accessible environments, including pedestrian crossings, railway platforms, and ADA curb ramps.

—Detectable Warning Systems, www.detectable-warning.com



Master X-Seed 66

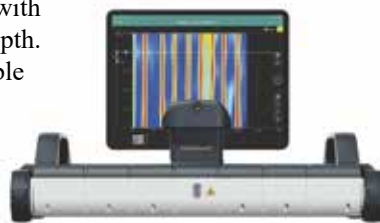
Master X-Seed® 66 is a patent-pending, water-reducing, and strength-enhancing admixture that improves both early and late age strength in the development of concrete while supporting sustainable construction. Master X-Seed 66 admixture is based on a technology that facilitates cement hydration. It includes polycarboxylate technology that helps produce concrete mixtures with different levels of workability. Master X-Seed 66 admixture meets ATSM C494/C494M requirements for Type A (water-reducing) admixtures. The strength-enhancing property of Master X-Seed 66 admixture permits a reduction in the total cementitious materials content of a given concrete mixture while maintaining compressive strength development equivalent to that of reference concrete with associated benefits in CO₂ emissions reduction.

—Master Builders Solutions, www.master-builders-solutions.com

Ground Penetrating Radar GP8100

The GP8100 features the world's first large scan width ground penetrating radar (GPR) with the Superline scan to deliver object detection and data clarity alongside deep penetration depth. One Superline scan with the GP8100 is the equivalent of six classical line scans. The portable concrete GPR enables quick detection of objects of any size, allowing inspection engineers to collect dense inspection data with just one Superline scan. Users also benefit from the unique data clarity, with two-dimensional time-slice, three-dimensional tomography, and augmented reality in real time. The GP8100 can be used for multiple applications, including concrete inspection of large areas in buildings or bridge decks; object detection and damage prevention before drilling, coring, or cutting into concrete; and GPR data collection for concrete structural assessment and post-processing data.

—Screening Eagle, www.screeningeagle.com



Next Generation G2 Volumetric Concrete Mixer

Holcombe Mixers, a provider of volumetric concrete mixers and strategic solutions for the concrete industry, announced the company's next-generation mobile mixer—the G2. The G2 features an Intellicrete Control System that keeps admixtures and additives consistently in sync with the concrete production rate, yielding unparalleled concrete quality. The mixer's WaterSmart Moisture Control System controls concrete slump with dynamic calibration flow control with an electronic proportional water valve, and its InsightFlow Cement Feed optimizes aggregate gate positioning. The G2 also features a load-sensing variable displacement hydraulic system that reduces temperature and extends the life of components, and a patented modular cassette conveyor system that is an easily removable modular conveyor cassette with engineered roller chain that enables belt changes in under 4 hours.

—Holcombe Mixers, www.holcombemixers.com



Book Notes

Fire Safety for Very Tall Buildings, Second Edition

by The Society of Fire Protection Engineers, The International Code Council, and Springer

The Society of Fire Protection Engineers (SFPE), a professional society for fire protection and fire safety engineering; The International Code Council (ICC), a global source of model building codes and standards and building safety solutions; and Springer, a worldwide scientific and technical publisher, announced the release of the second edition of the engineering guide: *Fire Safety for Very Tall Buildings*. The guide provides information on the fire safety performance of tall, very tall, and super tall buildings, including emergency egress, fire resistance, building envelope, suppression, detection, alarms, and smoke control. New guidance is provided on considerations for existing buildings, energy storage systems, aerial vehicle platforms, and unique building features such as observation decks and firework displays. Additional information is provided on performance-based design and international practices.

—The Society of Fire Protection Engineers, www.sfpe.org

—The International Code Council, www.iccsafe.org

—Springer, <https://link.springer.com>

\$109, 276 pp.; ISBN: 978-3-030-79013-4

Sign up for
Concrete
SmartBrief

*The smart way to stay
on top of concrete
industry news.*

Created by SmartBrief in partnership with ACI, Concrete SmartBrief provides a daily email snapshot of the concrete industry with news from leading global sources. Summaries of what matters to you, written by expert editors, to save you time and keep you informed and prepared.

Welcome to Concrete SmartBrief; sign up at:

www.smartbrief.com/ACI

Product Showcase

Decorative Concrete Products

WerkMaster ULTRAguard

WerkMaster's range of environmentally friendly formulations have been developed to eliminate the high-maintenance requirements of conventional floor finishes, producing results that protect and enhance the cosmetic appeal of the floor. WerkMaster ULTRAguard seals and protects polished concrete, decorative concrete finishes, stone, and terrazzo floors. This stable sealer provides a slip-resistant surface (James Scale Rating of 0.7) that is safe for use in airports, shopping malls, and other commercial and residential projects, especially in high-traffic areas. WerkMaster ULTRAguard is easy to apply, has a 500 to 700 ft² (46 to 65 m²) per gallon coverage rate, and has zero volatile organic compounds.

—WerkMaster, www.werkmaster.com



SikaColor-400 Opaque

Sika Corporation introduced SikaColor®-400 Opaque, a reactive acrylic solid color concrete stain that etches the surface and penetrates the substrate. It therefore adheres to the concrete, lessening the potential for delamination and peeling of the coating. Its feature of etching concrete surfaces eliminates an acid etching surface preparation step, which avoids the need for hydrochloric acid and the associated risks of runoff into soil and drainage systems. The concrete surface should be clean, dry, and free of foreign contaminants for successful application.

—Sika Corporation, www.sika.com



Ultratop Decorative Topping Solutions

The Ultratop® systems of self-leveling concrete toppings from MAPEI provide the ability to resurface a wide variety of interior surfaces quickly and durably. The Ultratop Polished System uses Ultratop SP and Ultratop PC self-leveling cementitious toppings to provide a fine-aggregate exposed finish. The system is suitable for light vehicular traffic in residential, commercial, and industrial applications. It can be installed at depths from 0.4 in. (10 mm) and extended with aggregate that is up to 0.25 in. (6 mm). The Ultratop Terrazzo System uses Ultratop, especially the white version. The system can be installed with large aggregate ranging from 0.4 to 1 in. (10 to 25 mm), providing exposed texture to recreate the look of Venetian cementitious terrazzo. The toppings can be installed in a matter of hours, and they can withstand the wear and tear of heavy traffic, spills, and repeated cleanings.

—MAPEI, www.mapei.us



Stone Edge Surfaces Wall Mix

Stone Edge Surfaces Wall Mix is a “just add water,” bagged polymeric concrete mixture with added fiber, aggregate, and other proprietary additives that create a wall mixture that allows 1 to 6 hours of working time for stamping or carving. Stone Edge Surfaces Wall Mix can be used for vertical or overhead applications. It is 33% lighter than standard concrete or mortar and can be applied in thickness ranging from 0.25 to 4 in. (6 to 102 mm) without drooping. Stone Edge Surfaces Wall Mix can be used in residential and commercial applications, in vertical, interior, or exterior applications, to create custom finishes or match the look of existing materials. Wall Mix creates a realistic simulation of wood, stone or brick veneers, stacked stone, cliff faces, boulders, and grottos. Stone Edge Surfaces Wall Mix has been used in commercial aquariums to create natural-looking mammal and aquatic habitats.

—Stone Edge Surfaces, www.stoneedgesurfaces.com



The Contractor's Guide to Quality Concrete Construction

The fourth edition of the best-selling *Contractor's Guide to Quality Concrete Construction* is now available in print and digital formats.

Written by and for contractors, and referenced by many licensing authorities, this guide details proven practices for quality concrete construction.



American Concrete Institute
Always advancing
concrete.org



AMERICAN SOCIETY OF
CONCRETE CONTRACTORS
Enhancing the Capabilities of Those Who Build with Concrete

ascconline.org