

## Coval Matting Agent

Coval Technologies announced the addition of the Coval Matting Agent to the gloss finish of Coval coatings to create a satin or matte finish. Packaged in sizes of 15.4 g (0.54 oz.) for a 1 gal. (4 L) unit, and 77 g (2.7 oz.) for a 5 gal. (19 L) unit, Coval Matting Agent can be added to Coval coatings like Coval Concrete, Coval Ultimate Top Coat, and Coval Vinyl. The matting agent can be combined with a portion of the Coval coating in a mixing container using a paddle paint mixer with a low-speed handheld drill. Then, the remaining 1 or 5 gal. pail of Coval is slowly added to the container and thoroughly mixed. A good dispersion of Coval Matting Agent is essential to ensure optimum performance.

—Coval Technologies, <https://covaltechnologies.com>

## KCI RoboFlat

KCI Technologies, Inc., launched RoboFlat™, a cloud-based product for concrete floor flatness and levelness testing. Designed to address floor challenges in a variety of robotic-equipped facilities, this product streamlines testing operations, processing large volumes of data and delivering rapid results. With RoboFlat, contractors and building owners can be assured that their floors meet the required flatness specifications. Users can upload point cloud data generated from laser scanners, enabling further analysis and evaluation and automating multi-step processes.

RoboFlat supports a range of floor standards that can be tailored to meet specifications. The product helps remediation teams quickly identify the exact location of any flatness issues on the floor slab, generating heat and contour maps with cut and fill values and detailed output that can be overlaid onto the floor design. The product also includes a report generation feature, allowing users to customize reports to share with stakeholders.

—KCI Technologies, Inc., [www.kci.com](http://www.kci.com)



## Applied Software Advance Design

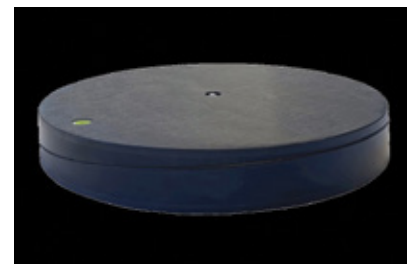
Applied Software Advance Design is software that accelerates users' daily work by enabling collaboration with drafters on a single model. Created for structural engineers who use building information modeling (BIM) workflows, Advance Design offers convenient BIM collaboration with Autodesk Revit 2024 using the new analytical capabilities of PowerPack for Revit. This technology equips designers with graphical results and informative reports, allowing them to make carbon emission estimations and environmentally conscious decisions regarding the structural engineering aspects of their designs. Reinforced Concrete Modules in this software act as tools for designing and analyzing reinforced concrete structures. These modules offer a wide range of functionality, allowing engineers to efficiently create accurate and optimized designs.

—Applied Software, GRAITEC Group, <https://asti.com>

## DICA LevelRight

DICA announced LevelRight, a new solution for operators of boom trucks, cranes, concrete pumps, jacking applications, and other equipment with outriggers that must be operated in a level condition. LevelRight users can easily adjust the overall angle from 0 to 10 degrees and adjust in two planes up to 5 degrees. The 24 in. (610 mm) diameter LevelRight will accept up to a 20 in. (508 mm) square or 24 in. round outrigger float. It has a rated capacity of 350,000 lb (158,757 kg). LevelRight is made of SafetyTech material with DICA safety texturing on the top and bottom surfaces. It also has a built-in bubble level to provide operators with confirmation when they have a level surface under their equipment's outriggers.

—DICA, <https://dicausa.com>



## C60 Opportunity Platform

C60 announced updates to its C60 Opportunity Platform, which enables ready mixed concrete producers to identify and drive profitability improvements with the use of advanced analytics. C60 provides producers an opportunity to find savings potential across their entire business with easy-to-read, actionable insights. Four areas of the C60 Opportunity Platform were updated. The Margin by Customer feature computes the “margin on material” and “margin on material and delivery” for each customer. The system ranks customers based on profitability to help producers act on opportunities to improve underperforming customers or harvest more business from top performers. The Sales Analyzer helps producers answer ad hoc questions from all customers and enables users to have a conversation using sales data by filtering across time, plants, customers, projects, and market segments. The Truck Usage dashboard allows for appropriate fleet size evaluation and quickly spots trucks in the fleet that may be candidates for either disposal, an improvement plan, or relocation to a plant that would make better use of the asset.

—C60, <https://c60.ai>



## Vanguard Motors and Motor Controllers

Vanguard introduced the MVG Series of motors and motor controllers. The new product line includes different power options to meet voltage needs across equipment sizes. These options include the MVG1500, MVG2200, MVG3000, and MVG4000 motors and MC2000, MC4000, and MC8000 motor controllers. The MVG Series serves a wide variety of industries and applications. The design of the motors and motor controllers maximizes ease of integration and serviceability, making it an ideal solution for compact equipment such as blowers and walk-behind trowels, as well as pumps, sprayers, power rakes, and more.

—Vanguard, [www.vanguardpower.com](http://www.vanguardpower.com)

## NSC Double-Tee Flexible Connection

The Double-Tee Flexible Connection (DTFC) from Northford Structural Connections (NSC) is a post-installed flexible connection for seismic and vehicular loadings. The DTFC is designed to both repair and avoid the common pitfalls of the traditional connection. It is corrosion-resistant, allows movement across the joint to dissipate tensile loads, and is not affected by vehicular fatigue loading. The DTFC was designed by industry experts with cyclic loading in mind and can be installed on existing structures.

—Northford Structural Connections, <https://nsclips.com>



## Book Notes

### ***The State of Registered Apprenticeship Training in the Construction Trades, 2024 Edition* by Cihan Bilginsoy and Russell Ormiston**

Researchers from the Institute for Construction Employment Research (ICERES) launched an annual compendium on the performance of the United States’ skilled trade apprenticeship programs. In *The State of Registered Apprenticeship Training in the Construction Trades, 2024 Edition*, the authors develop a comprehensive, national assessment of construction apprenticeship programs, detailing the number of registrations, completion and cancellation rates, demographic trends, program designs, and wage rates across 17 different skilled trades. Construction trades represent 65% of all registered apprenticeships in the United States. *The State of Registered Apprenticeship Training in the Construction Trades, 2024 Edition*, opens by providing a historical perspective of industry employment, the age of skilled tradespeople, and the job choices made by young workers. It then offers 14 chapters featuring easy-to-read graphs that detail patterns in apprenticeship registrations and outcomes across states, trades, demographics, training models, and the union affiliation of programs.

**75 USD; 71 pp.**

—Institute for Construction Employment Research, [www.apprenticebook.com](http://www.apprenticebook.com)

# Product Showcase

## Placing, Finishing & Testing Tools

### Cemen Tech CD2

Cemen Tech's fully automated dual-bin volumetric concrete mixer, the CD2, features a unique split bin with separate compartments to transport and blend countless materials, including fly ash or other dry additives. The product's distinctive design includes individual compartments to carry and combine up to 115 ft<sup>3</sup> (3 m<sup>3</sup>) of cement and 80 ft<sup>3</sup> (2 m<sup>3</sup>) of supplementary cementitious materials (SCMs). The CD2 ensures precise measuring, mixing, and dispensing of concrete from a single unit. Each ingredient—sand, stone, cement powder, fly ash, water, and additives—is stored in a separate compartment and mixed precisely in real time, on site. The unit can be programmed to save hundreds of mixture designs, which can then be selected and started with the touch of a button by a single operator for fresh concrete every time.

—Cemen Tech Inc., <https://cementech.com>



### JLG Telehandlers

The JLG® and SkyTrak® full line of telehandlers includes compact, high-capacity, and high-reach models, with a variety of accessories available to support heavy lifting and placing tasks. The new JLG rotating telehandlers offer concrete contractors even more lift capacity and reach, up to 4400 lb (1996 kg), at a maximum height of 97 ft (30 m). Because they can rotate, the operator can set up in one place and pick and place objects without driving around the site. Like the JLG and SkyTrak fixed-boom models, JLG rotating telehandlers can be used with various attachments, including 360-degree rotating forks, buckets, and a fork positioning carriage, to provide operators with more capabilities and the ability to adapt to multiple tasks efficiently.

—JLG Industries, Inc., [www.jlg.com](http://www.jlg.com)



### Deslauriers Cure Max

The Deslauriers Cure Max is designed to ensure the maintenance of optimal curing temperatures during initial field curing for up to 48 hours. With its thermostatic control feature, it maintains temperatures between 60 to 80°F (16 to 27°C) without the use of water, ensuring consistent results. The Cure Max works for curing test specimens in any season and can also keep tubes of caulks, sealants, and adhesives in a pliable working condition during cold weather. The Cure Max can accommodate 27 6 x 12 in. (152 x 305 mm) cylinders or 60 4 x 8 in. (102 x 203 mm) cylinders. It's ASTM C31/C31M and AASHTO T 23 compliant and includes a thermometer that meets ASTM C1064/C1064M.

—Deslauriers, Inc., <https://deslinc.com>



## Forney Connected Machine

The Forney Connected Machine is a construction materials testing (CMT) machine that can help eliminate the possibility of specimen misidentification. With this product, a technician can load and test a specimen twice as fast and with assurance that they are testing the right specimen on the right date. “Connected” functionality is made possible through a two-way integration with ForneyVault, a software platform that provides benefits before and after the lab test occurs. Before strength testing, the connected machine “knows” what it’s testing with positive specimen identification through a barcode scan. The product also completes pre-test “Smart Checks” based on preloaded sample and specimen data to validate sample date, size, and type, expected strength, and specimen geometry. It then calculates preload settings based on expected strength. After strength testing, the Connected Machine creates detailed x-y plot data for every test performed. It provides alerts and notifications about calibration expiration, correction factors, individual low breaks, and excessive variance.

—Forney LP, <https://forneyonline.com>



## Anyone. Anytime. Anywhere.

Instantly Verify  
an individual’s  
ACI Certification.  
Download the ACI  
Certification Verify App now!



To learn more or download  
the Verify App, visit  
[concrete.org/verify](https://concrete.org/verify).

